



ELYSIAN HOMES

An Iconic Landmark Located
@ HITEX GATE, SHILPA HILLS, MADHAPUR.

A PLACE FOR ALL THOSE
WHO DESERVE A GRAND WELCOME

Offering a new level of uncompromising indulgence for a selective few like you who accept nothing less than perfection. The perfect example of a world class boutique community Elysian Homes is the flagship project flush with amenities and the best luxury possible. An ideal community in the middle of it all.

ELYSIAN
HOMES





ELYSIAN HOMES

TYPICAL FLOOR PLAN AREA STATEMENT IN SFT

001	002	003
1800	1795	1800
3 BHK	3 BHK	3 BHK
EAST	WEST	EAST

004	005
1800	1795
3 BHK	3 BHK
EAST	WEST



Live easy in peaceful surroundings

While you will live in a wonderfully designed structure, what you will have at Elysian Homes is, opening the drapes to the spaciousness around. We have made sure the community you would live in is as open to nature, as would comfortably be, with landscaped greenery. Of course the no common wall design provides for an assured privacy, spaced between every home.

PROJECT HIGHLIGHTS

- + 3 BHK Apartment
- + Covered Car Parking
- + No Common Walls
- + Generator Power Backup
- + Clear Title
- + Round the Clock Security
- + Prime Quality Construction
- + CCTV Surveillance Provision
- + Excellent Ventilation
- + Rainwater Harvesting
- + Prime Residential Area
- + Johnson or Equivalent Lift

PERFECT DETAILS FOR A QUALITY LIFESTYLE



FRAME WORK
R.C.C. framed Structure



SUPER STRUCTURE
Red Bricks



DOORS
Main Door: Best Teak Wood Frames and Teak Wood Shutters aesthetically designed with fine finished melamine polishing.

Internal Doors: Teak Wood Frame with Flush Doors.



WINDOWS
UPVC Frames with glass



FLOORING
Vitrified Tiles Flooring in living, dining, bedrooms and kitchen (RAK, Kajaria or equivalent). Anti Skid Ceramic Tile Flooring in Toilets, Balconies and utility areas.



KITCHEN
Granite platform with stainless steel sink. Glazed ceramic tiles dado upto 2' height above kitchen platform.



CABLE
Provision for cable T.V. in living room and all bedrooms.

S P E C I F I C A T I O N S



TOILETS
Hot and cold mixer with shower. C.P. fittings and sanitaryware of jaquar, kohler or grohe make



ELECTRICAL
Concealed copper wiring of standard make in all necessary areas. Power outlets for Air Conditioning in living room and all bedrooms. Power outlets for TV's, Refrigerator, Microwave Oven, Mixer/Grinder etc.



POWER BACKUP
Stand-by generator of reputed make to operate lift, pumps, lobby, staircase lighting and 8 lights and 4 fan points in each flat.



WATER
Common overhead tank with water lifting by pump from borewell. Sump will be provided



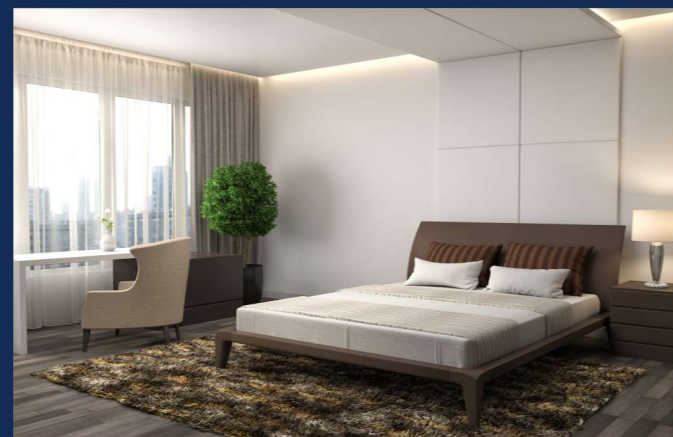
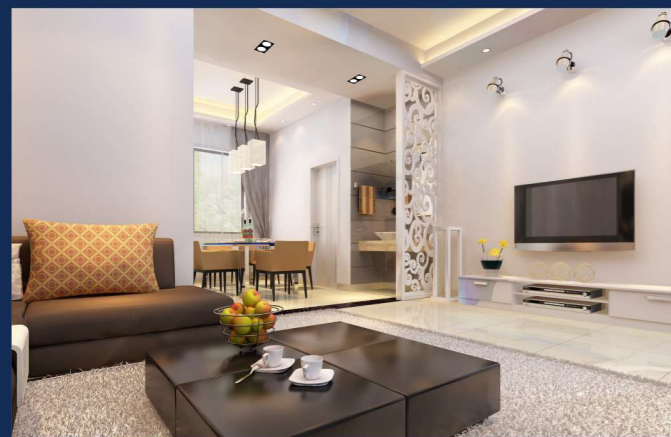
PAINTING
Internal: Smooth putty finish with emulsion paint.

External: Combination of textured/ smooth finish based on design

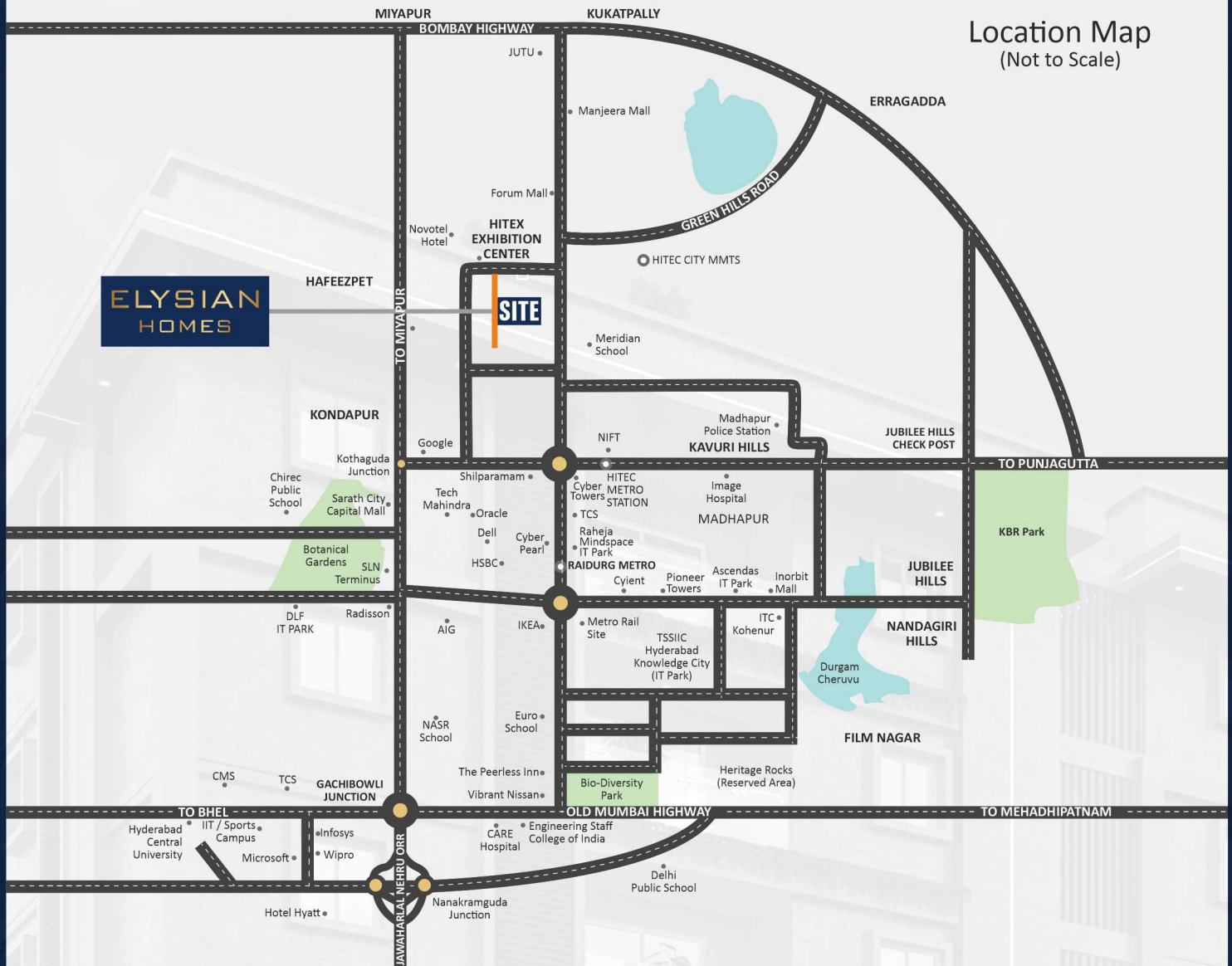
Where elegance and luxury are standard

At Elysian Homes the experience begins from the moment you step in. The apartment offers unrestricted view of the surroundings, elegant design elements complement the clean, open and modern architecture. The perfect ingredients to live life just the way it should be.

ELYSIAN HOMES



Location Map (Not to Scale)



◆ Hitex Exhibition Center - 650 Mtrs.



◆ Cyber Tower Metro Station - 2.4 Km



◆ Chirec Int. School - 5.1 Km
◆ Delhi Public School - 9.1 Km

◆ Oakridge Int. School - 8.5 Km
◆ Meridian School - 2.2 Km



◆ Image Hospital - 4.2 Km
◆ Apollo Hospital - 9.2 Km
◆ Care Hospital - 5.1 Km



◆ Trident Hotel - 2.9 Km
◆ Novotel Hotel - 1.3 Km



◆ Forum Sujana Mall - 3.4 Km
◆ Inorbit Mall - 4.9 Km



◆ Rajiv Gandhi Int. Airport - 33.7 Km



◆ Botanical Garden - 3.6 Km



◆ Gachibowli Outer Ring Road - 5.6 Km



Office Address:

6-3-879/B,
2nd Floor, G.Pulla Reddy Building,
Somajiguda, Hyderabad - 500 016.

Site Address:

Plot No.: 66 to 69 , Road No.:03,
Shilpa Hills Layout, Izzathnagar,
Hyderabad - 500 084.



+91 98851 01126, 98493 24199



sales@mrpropertyventures.com



www.mrpropertyventures.com

Note: This brochure is only a conceptual presentation of the project and not a legal offering. The promoters reserve the right to alter and make changes in elevation, specifications and plans as deemed fit.